



AIR FILTER REGULATOR



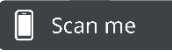
ISO 9001
Quality 

ISO 14001
Environment 

OHSAS 18001
Health & Safety 



AIR FILTER REGULATOR



DESCRIPTION

Convalve air filter regulator, specifically the YT-200 model, is an essential device used in pneumatic systems. Its primary function is to receive the main supply of compressed air pressure and regulate it to a desired level before supplying it to positioners or other pneumatically-operated devices.

The device is designed to filter out any impurities or contaminants present in the compressed air supply, which can potentially damage sensitive pneumatic components. The regulator then reduces the pressure of the filtered air to the required level, which can be adjusted according to the application's specific requirements.

The air filter regulator also includes a gauge, which displays the pressure readings and ensures that the system operates within the acceptable range. This feature provides real-time monitoring of the air pressure, enabling operators to identify any abnormalities and take corrective action promptly.

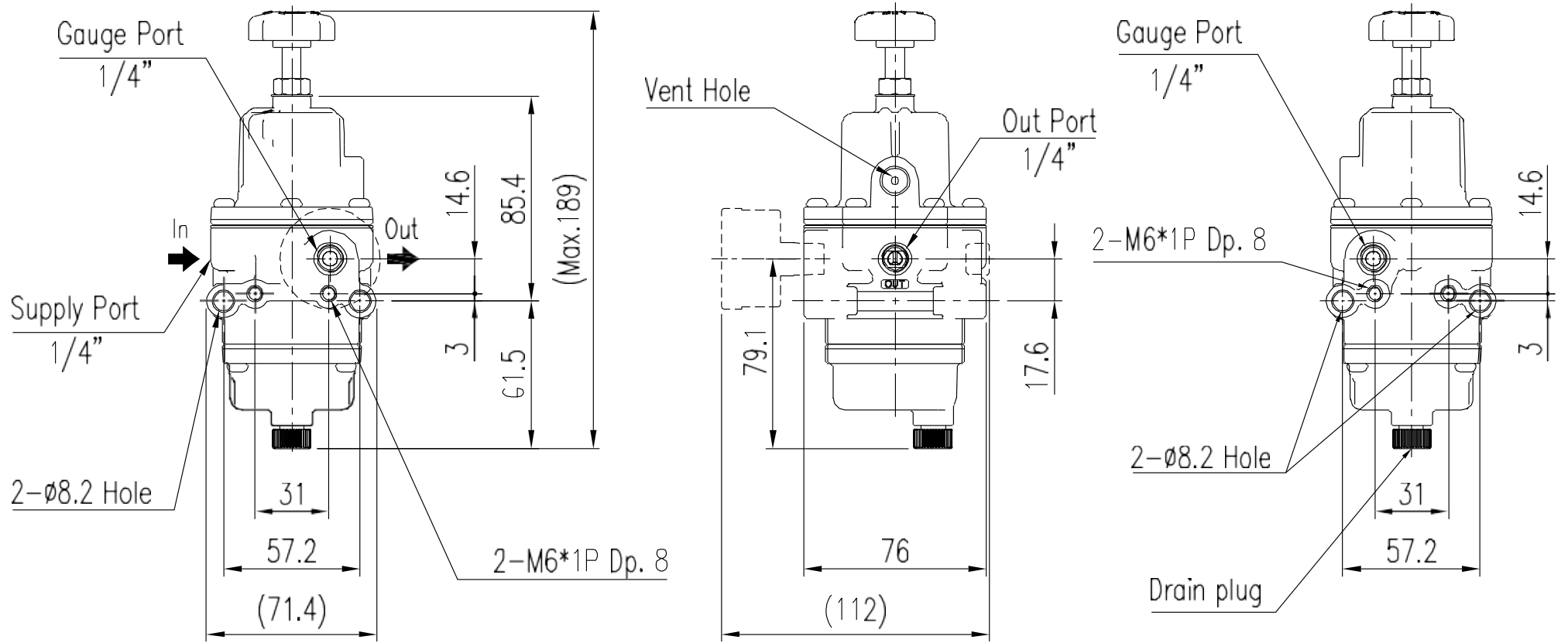
FEATURES

- The YT-200 air filter regulator is a highly reliable device used in pneumatic systems. It performs the crucial function of maintaining a consistent and desirable pressure level, regardless of any fluctuations in the main supply pressure.
- One of the key features of the air filter regulator is its 5-micron filter. This filter effectively removes most of the particles present in the main supply pressure, preventing them from causing damage to sensitive pneumatic components downstream.
- The air filter regulator also includes a relief function that discharges any excess pressure to the atmosphere. This function is particularly useful in situations where the output pressure exceeds the preset level, ensuring that the system operates within safe limits. The air filter regulator is designed for high durability in various environments. It is available in both aluminum and stainless steel body options, which offer excellent resistance to corrosion and other forms of damage.
- The device is available with manual or automatic draining options, enabling operators to choose the most suitable drainage method for their specific application.
- Overall, the YT-200 air filter regulator is an essential component in pneumatic systems. Its ability to maintain a consistent pressure level, filter out impurities, and discharge excess pressure ensures the safe and reliable operation of downstream components.

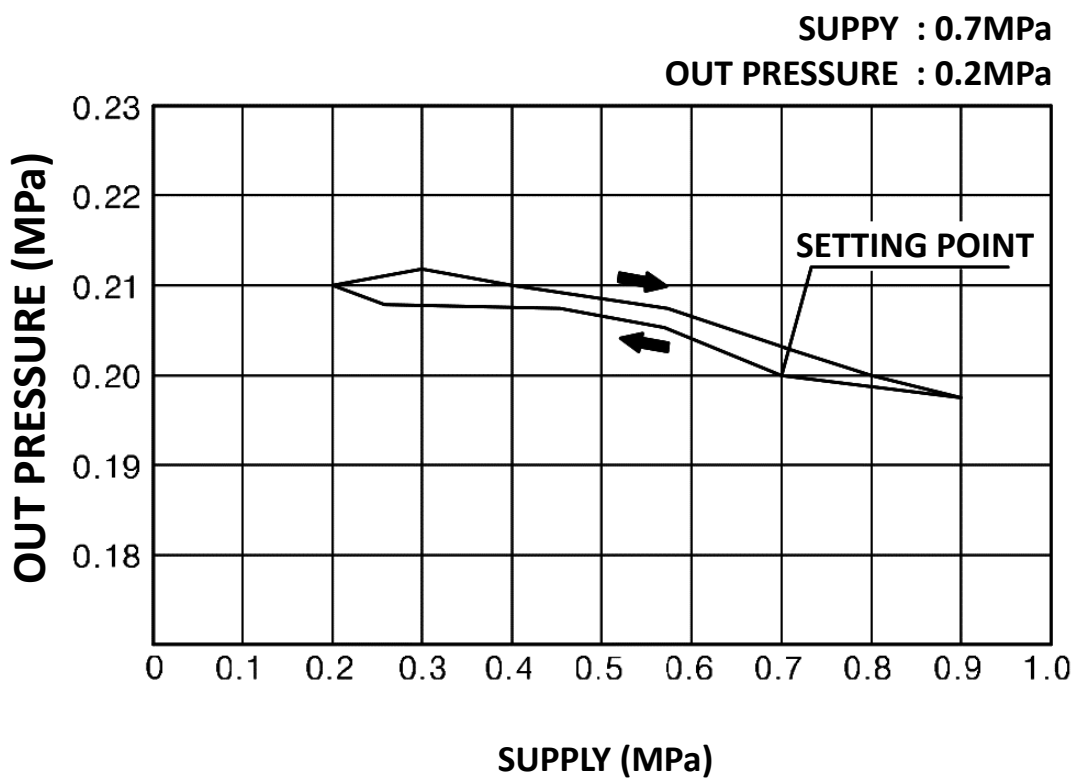
SPECIFICATION

MAXIMUM SUPPLY PRESSURE		1.7 MPa (17 bar)
MAXIMUM OUT PRESSURE		0.42MPa (A Type), 0.84MPa (B Type)
AIR CONNECTION		Rc 1/4 or 1/4 NPT
GAUGE CONNECTION		Rc 1/4 or 1/4 NPT
AMBIENT TEMPERATURE	STANDARD	-20 ~ 70°C (-4 ~ 158°F)
	HIGH	-20 ~ 120°C (-4 ~ 248°F)
	LOW	-40 ~ 70°C (-40 ~ 158°F)
	ARTIC	-50 ~ 70°C (-58 ~ 158°F)
MINIMUM FILTERING SIZE		5 micron
HOUSING MATERIAL		Aluminum
WEIGHT	MANUAL DRAIN	0.65 kg (1.4 lb)
	AUTO DRAIN	0.71kg (1.56 lb)

DIMENSIONS MM



PRESSURE CHARACTERISTICS



FLOW CHARACTERISTICS

